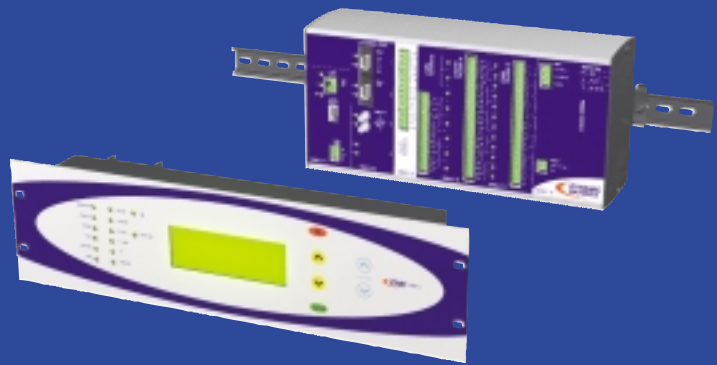




MONITORING CONTROL COMMUNICATION



DRMCC-T3



PREDICTIVE LOADING CAPACITY:

Defer capital purchases.
Improved control of emergency loading occurrences.

IMPROVE SYSTEM RELIABILITY:

Catch problems on vulnerable or critical equipment.

COMMUNICATION:

Multiple communication options including an integrated web server.

DATA CONSOLIDATION:

Replaces several control devices, providing control, monitoring & data acquisition for the entire transformer

ACTIONABLE INFORMATION:

Summary alarms.
Dynamic rating - predictive loading capacity.

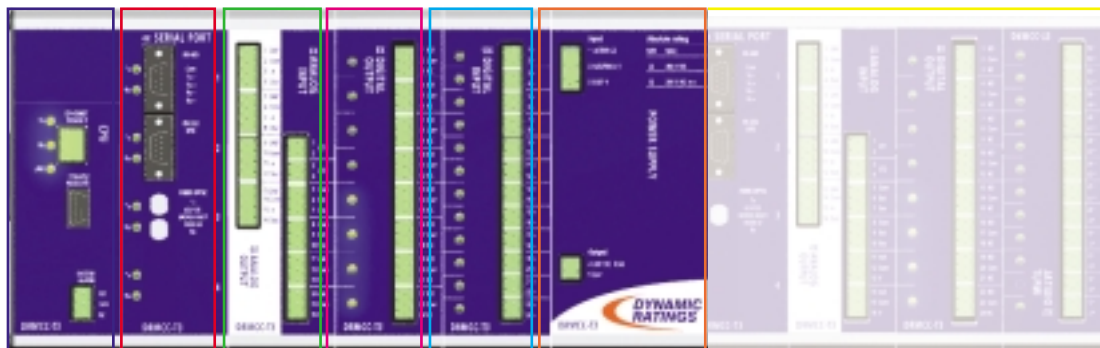
PRODUCT LEADERSHIP:

Developed by a leading transformer company for use on their own transformers.

Modular, Expandable Design

Modular design allows economical and easy expansion. Expansion modules can be ordered initially or added later as transformer monitoring needs change.

Control Unit (CU)



Processor Module (CPU):

- Data storage for 52 weeks (rolling) saved at one minute intervals.
- Utilizes industrial flash memory card.
- Ethernet - 10 Base T

Communication Module (Serial Port):

- Supports DNP 3.0, Modbus and TCP/IP.
- Multiple Communication ports. Select from RS-232, RS-485 or Fiber.

Analog Module:

- (2) RTD input.
- (2) Analog input 4-20mA or 0-10VDC.
- (2) CT input.
- (4) 4-20mA Output.

Optional Expansion Modules:

- Expandable by adding up to (4) of any module type.

Universal Power Supply Module:

- 24 - 125 VDC
- 120 - 240 VAC

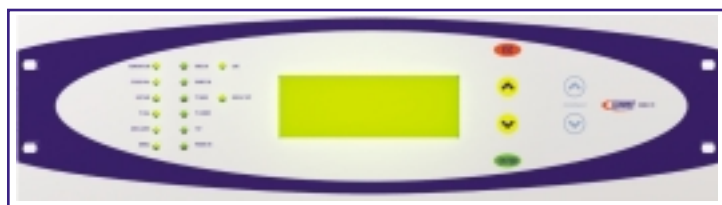
Digital Input Module:

- (12) General purpose digital input

Digital Output Module:

- (8) General purpose digital output.

User Interface (UI)



- 14 Status LEDs
- 4 lines x 20 Characters
- Large character size of 4.84mm x 9.22mm
- Automatic temperature compensated contrast adjustment

For more information please contact:

DYNAMIC RATINGS Pty Ltd

P.O.Box 5, Wilson Road, Glen Waverley
VIC, 3150 Australia

Tel: +61 3 9574 7722

Fax: +61 3 9560 0793

sales@dynamicratings.com

www.dynamicratings.com

DYNAMIC RATINGS Inc

N59 W14339 Bobolink Ave.

Menomonee Falls, WI 53051 USA

Tel: (262) 703-0792

Fax: (262) 703-0793

drmcc@dynamicratings.com

www.dynamicratings.com

WILSON TRANSFORMER Co Pty Ltd

P.O.Box 112, Crawley RH10 3GU

United Kingdom

Tel: +44 13 4271 9473

Fax: +44 13 4271 9492

wlcuk@aol.com

Monitoring

Temperatures:

- Top oil temperature
- Ambient temperature
- Winding hot spot calculation (for each winding)
- Direct winding temperature from fiber optic sensors.
- Bottom oil temperature

Cooling System:

- Fan/pump failure
- Fan/pump run hours
- Cooling contactor fail
- Cooling breaker trip
- Cooling switch position

Load Tap Changer:

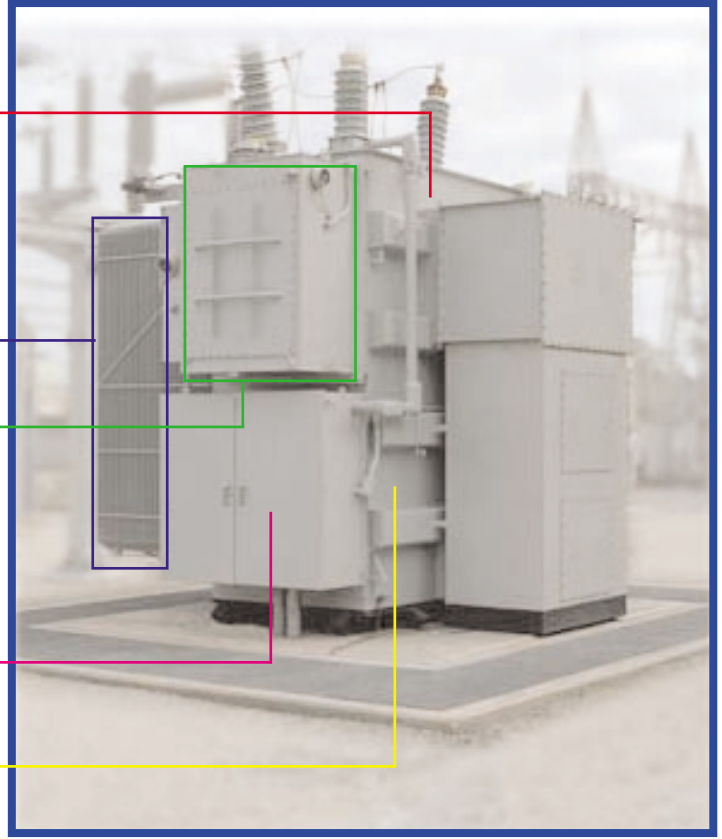
- Tap Position indication
- Tap counter (per position)
- Time since last through N
- Delta T
- Oil level high/low

Alarm Contacts & Ancillaries:

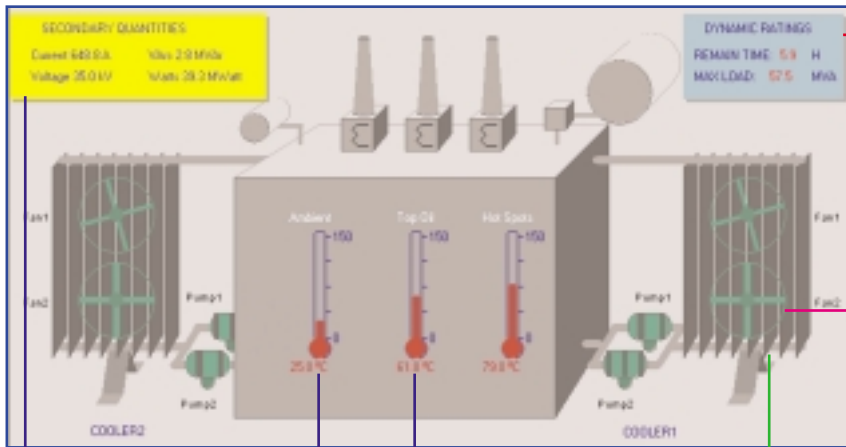
- Sudden Pressure
- Low/High Oil Level
- Nitrogen Pressure

Core & Coil:

- Dissolved Gas
- Moisture in oil
- Insulation loss of life calculations



Control



Gain 10 - 20% more overload capacity:

- Remaining Time provides a forecast of how long an overload can be maintained
- Max Load indicates the maximum load the transformer can safely carry given the ambient and cooling system health
- "What If" calculations allow engineers to plan for alternative contingencies

Control up to 2 banks of cooling, each with:

- 2 Fan groups
- 2 Pump groups (duty cycled)

Smart Cooling Control Based On:

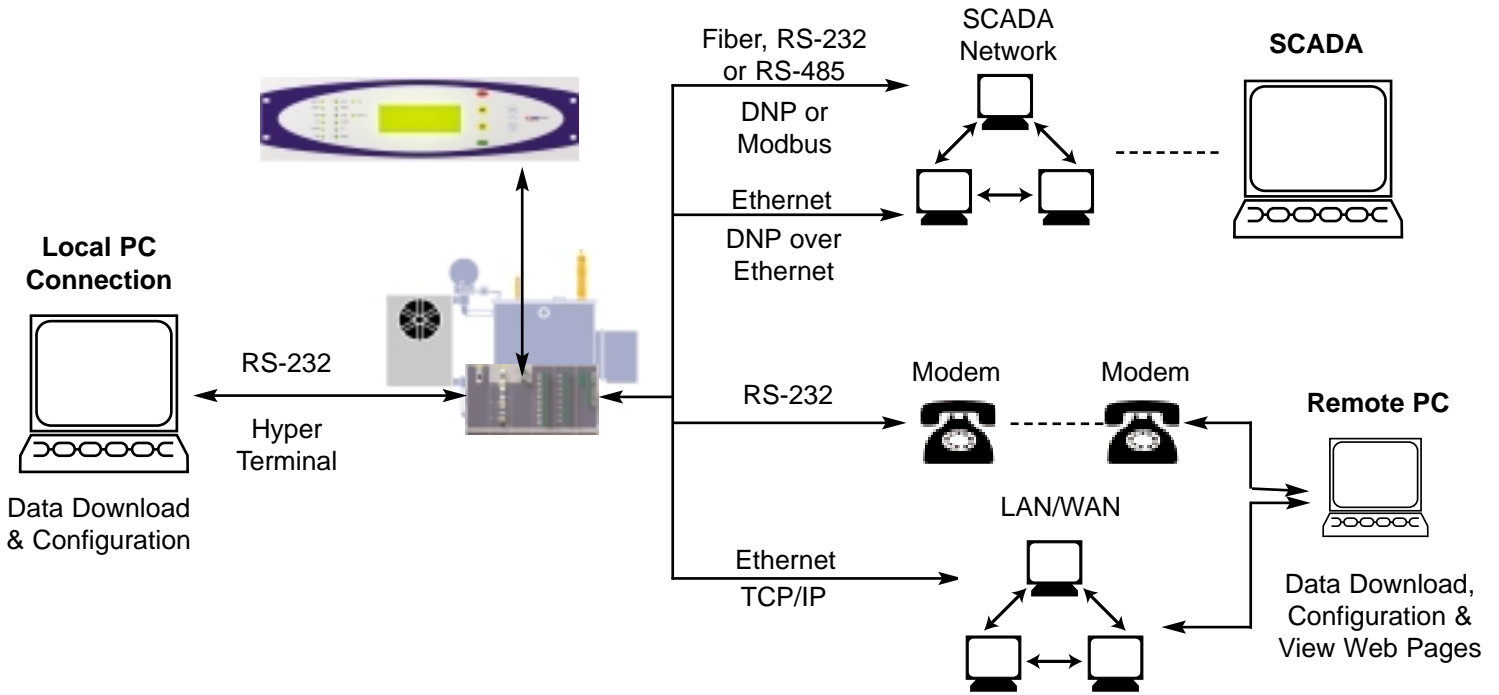
- Top oil temperature
- Transformer load
- Ambient temperature
- Transformer thermal models
- Cooling system health

Improved cooling system reliability:

- Automatic exercise of cooling fans and pumps
- Monitor amp draw of cooling system

Communication

Typical Connection Diagram (Other Options Available)



Built-in Web Server

