

NOTES:

DIGITAL INPUTS MAY BE CUSTOMISED USING SOFTWARE PROVIDED - SEE MANUAL FOR DETAILS
 ALL RELAY OUTPUTS ARE CONFIGURABLE - SEE MANUAL

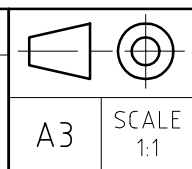
RATED -40 TO +85°C
 INTERNAL ANALOG (AMBIENT TEMP) -40 TO +110°C UPDATED EVERY 1.0 SECS
 RS-485: DNP 3.00 - LEVEL 1, REPORT BY EXCEPTION SUBSET
 MODULE DEPTH 95mm (FROM BOTTOM OF RAIL TO TOP OF COVER)

SETTING: 4 x ROTARY SWITCHES NUMBERED 1-4
 SETTING: RS-485 LINKS JP2, JP3
 REFERENCE: SICM3B USER REFERENCE MANUAL DRAFT E (23.05.01)

REV	DESCRIPTION	COMPILED	APPROVED	DATE
O	ORIGINAL ISSUE	ALR	MW	31.08.01
A	REVISED FOR T2 (DRAWING No. CHANGED)	BOZ		12.02.02
B	MODIFIED THE SCREEN CONNECTION OF SCREEN CABLE	BOZ		28.05.02

DIMENSIONS ARE IN MILLIMETERS

THIS DRAWING IS NOT TO BE COPIED NOR THE INFORMATION HEREON DIVULGED TO ANY THIRD PARTY OR USED FOR THE MAKING OF APPARATUS WITHOUT THE WRITTEN PERMISSION OF DYNAMIC RATINGS PTY LTD ABN 81 083 456 044



CONTROL CIRCUIT DIAGRAM
 DRMCC - T2
 SICM3B MODULE



134-0119E
 PAGE 1 OF 1